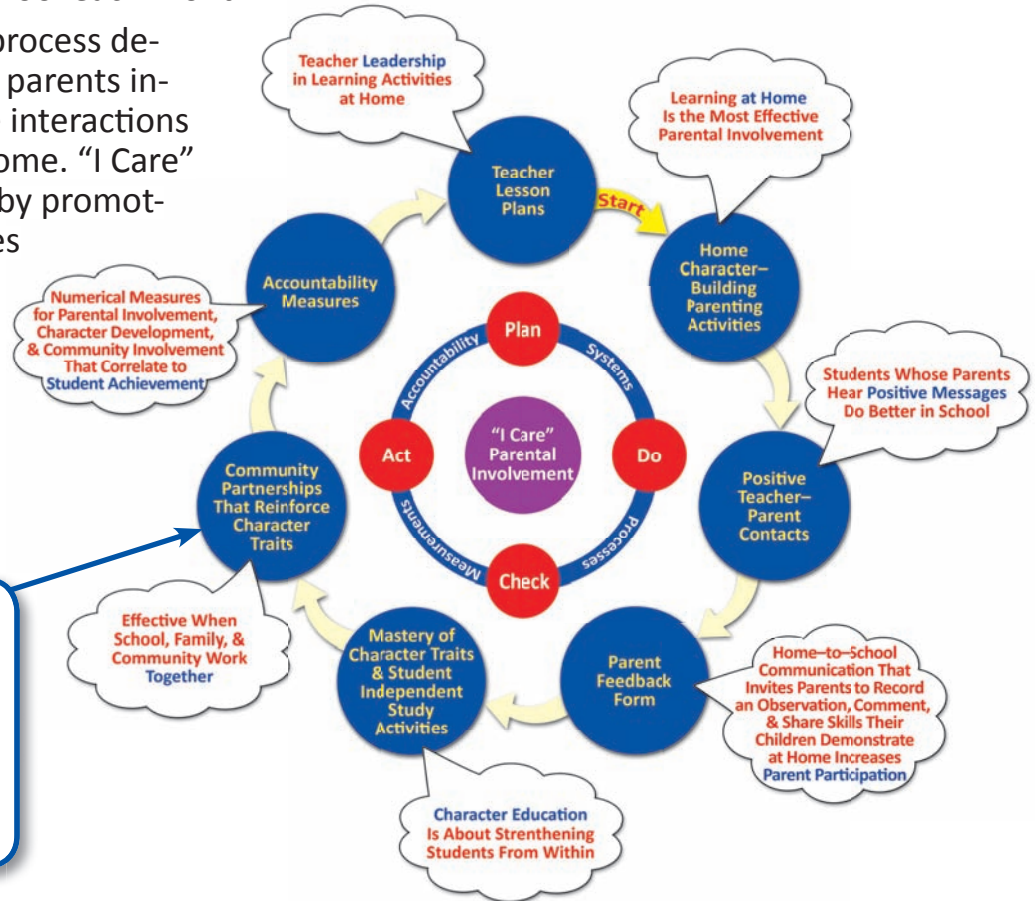


Connect the Dots Between Effective Parent Engagement and Academic Achievement

What Is “I Care”?

“I Care” is a research-based parent engagement curriculum that integrates parent involvement, character development, and community involvement into a single, measurable process. The curriculum enables parents, schools, and communities to simultaneously teach, reinforce, and model the same character traits being taught at school each month.

The “I Care” parent engagement process described to the right builds trust as parents increase and document the positive interactions they have with their children at home. “I Care” brings character education to life by promoting the teaching of universal values across the core curriculum of a school or district. The “I Care” parenting activities and teacher lesson plans are aligned with **National Education Standards**.



The “I Care” Positive Parenting Character Curriculum components are in **blue** circles, and the supporting research from which they were developed are in white call out boxes.

Parent engagement impacts can be measured with an “I Care” On-Line Parental Involvement Data Collection and Evaluation System. The system provides numerical measures monthly for parent participation, parents trained, parental involvement, mastery of character traits, community involvement in character development, and more.

MONTH	ENROLLMENT	YTD PARENTS TRAINED		PARENTAL PARTICIPATION		DISTRICT POSITIVE INVOLVEMENT		PARTICIPATION POSITIVE CONTACTS		TRAINED PARENTS PARTICIPATION		MASTERY OF CHARACTER TRAITS		COMMUNITY INVOLVEMENT			
SEP	3458	3287	95%	2858	83%	17783	51%	2615	76%	2615	91%	2776	97.1%	834	24.1%	1624	47.0%
OCT	3452	3366	98%	2731	79%	16930	49%	2548	74%	2548	93%	2699	98.8%	842	24.4%	1769	51.2%
NOV	3463	3418	99%	2744	79%	17076	49%	2576	74%	2576	94%	2729	99.5%	828	23.9%	1604	46.3%
DEC	3454	3422	99%	2657	77%	16113	47%	2468	71%	2468	93%	2649	99.7%	830	24.0%	1552	44.9%

Get Started Today!

Visit us on the Web and join for **free now** the “I Care” Parental Involvement Network at www.icarenow.com.



www.icarenow.com

800.797.5818